

IR Night Vision Binoculars



User Manual

Model: NV3182

Customer Service Email: support@dsoon-tech.com

Please contact us if you have any questions

Contact Us Via: support@dsoon-tech.com

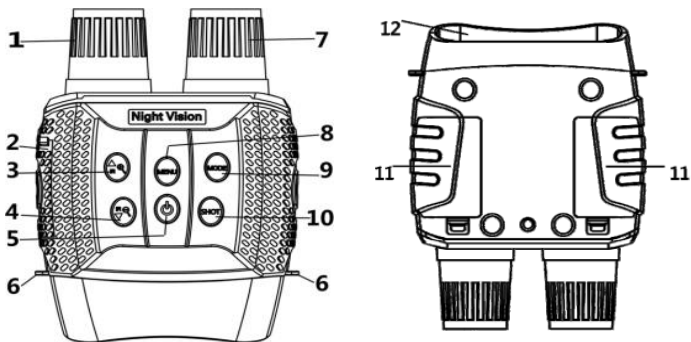
Contents

◆	Product Overview.....	5
	1) Key Guide	5
	2) Specifications	7
◆	Installation.....	9
	1) Install Battery	9
	2) Inserting Memory Card	9
	3) Formatting Memory Card	10
◆	Function & Operation.....	11
	1) Turn On and Turn Off.....	11
	2) Changing The Modes.....	11
	3) Three Modes.....	12
	4) Focusing the Image.....	14
	5) Digital Zoom.....	14

6) Turn On IR.....	15
7) Shoot Video/Photo.....	18
8) Menu Setting.....	18
9) Playback Video/Photo.....	21
10) Delete& Lock.....	22
11) Unclear Image Reasons.....	23
◆ Download files to PC	26
◆ Maintenance	27
◆ WARRANTY	28
◆ FAQ.....	29

◆ Product Overview

1) Key Guide



1. Focus Wheel	2. USB port/Micro SD card slot Cover
3. IR Up/Zoom in/Up Button	4. IR Down/Zoom out/Down Button
5. Power Button	6. Strap Hole
7. IR LEDs	8. Menu Button
9. Mode Button	10. Shot Button
11. Battery Cover	12. View Area

2) Specifications

Still Image Size:	1M(1280x960)/VGA(640x480)
Video Size:	960P (1280x960@30FPS) / VGA(640x480@30FPS)
Aperture:	F 1.2 f=25mm
Lens Angle:	FOV=10°, diameter is 24mm
Display Screen:	Inner screen 2.31"(960*240) TFT, Outer screen 98*48mm, 3x optical amplification
Digital Zoom:	4X
Storage Media:	Micro SD card, up to 32GB
Viewing Distance in complete darkness:	200M-300M
Viewing Distance	3M~infinity

in weak light:	
IR LED:	3W, 850nm
USB Port:	Micro USB 2.0
Power Source:	9V, 6xAA
Operating Temperature:	-20°C to +60°C
Storage Temperature:	-30°C to +70°C
Dimension:	approx.196*146*59mm
Weight:	approx.576g

◆ Installation

1) Install Battery

Please install batteries into the device before using.

1. Open the battery cover (11) on the back of the device.
2. Insert 6 x 1.5V AA brand Alkaline batteries into the battery compartment. Make sure the polarity is correct.
3. Close the battery cover (11) .

2) Inserting Memory Card

*There is a 32G Micro SD Card included in the package.

1. Open the card slot cover(2), you will see the card slot.
2. Insert the Micro SD card into the slot. Make sure the direction is right. Never insert the card forcibly.
3. Format the Micro SD card, this can improve the compatibility of the Micro SD card.

4. To remove the card from the memory card slot, press the edge of the memory card gently, the card will pop out. Then remove the card.

 **Note:**

- a. The device will prompt 'Please insert SD
- b. Card' if the TF card is not being installed.
- c. It's necessary to FORMAT the Micro SD card before using it.

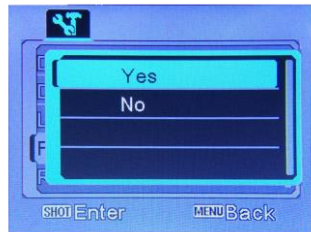
3) **Formatting Memory Card**

If you want to clear the data on the memory card, you can solve it by formatting. In the photo/video mode, press MENU button to enter the menu. Using the “IR +” or “IR –” button to select up and down, press the SHOT button to confirm.

 **Note:**

All data will be lost after formatting, please pay

attention to backup!



Function & Operation

1) Turn On and Turn OFF




Long press the POWER button(5) for 3 seconds to turn on the device. Long press the POWER button(5) to turn off the device.

2) Changing The Modes

The night version has 3 different modes: photo mode, video mode,

and playback mode. Press the Mode button(9) to change mode.

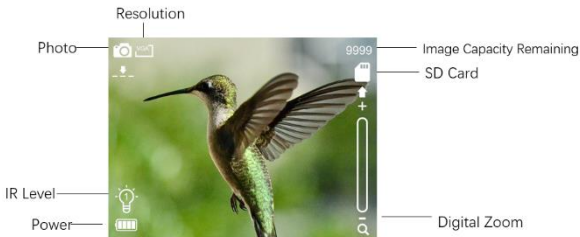
3) Three Modes

	Photo Mode	For taking still images.
	Video Mode	For recording video (Without Sound).
	Playback Mode	For playing the recorded files

- a. When the device is turned on, by default it will be in Video mode.



- b. Please press the “Mode” button (9) to switch to Photo mode.



c. View your subject via the LCD screen.

4) Focusing the image

On the left lens, marked “far” and “near”. If the observation distance is far, please rotate the lens to left. If the distance is near, please rotate the lens to right. Users can repeatedly adjust the optimal focal length according to the actual observation distance.

When you track the target is blurry, it means that you need to adjust the objective focusing handwheel, and repeatedly debug until you get a clear image.

5) Digital zoom

Keep pressing the “IR +” or “IR-” button (3 / 4) to zoom in or zoom out the image. the value of the magnification level

appears on the LCD screen, the maximum support 4x zoom.



Zoom Off




Zoom On

6) Turn on IR

In photo/video mode, if you have to view the darkness environment, please short press IR UP button to activate the IR LEDs, the image will change to black and white. The

IR LEDs have seven levels, short press IR UP button to up the level, short press IR DOWN button to down the level. (If the battery voltage is not enough, the IR LEDs level will down automatically. IR level can up to 7 level when the battery power is full. If only left half power, the level just can up to 5. If only left 25% power, the level just can up to 3. If the battery power is lower than 25%, IR LEDs can not be activated.)

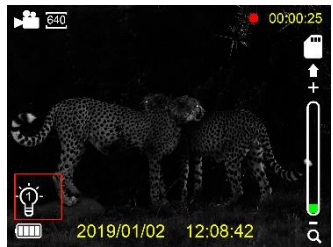
- ◆  **Note:** If the battery voltage is not enough, the IR LED level will get lower automatically.

Battery Power	IR Levels Available
100%	7

50%	5
25%	3
<25%	0



IR Off



IR On

7) Shoot video/photo

Turn on the device, if not in video/photo mode, please press MODE button to switch to video/photo mode.

The lens is aimed at the target and observed through the screen. Press the SHOT button to start recording/taking, and the recording duration will be displayed on the screen. During shooting, the video/picture recording is automatically saved in the memory card.

Note: When the memory capacity is full, the machine will automatically stop recording.

8) Menu setting

Press MENU button in photo or video mode to enter the menu, use the “IR +” or “IR -” button to select up and down, and then

select the item you want to change.

Menu	Function
Photo Resolution	Set the photo resolution. Options:[1M 1280x960]/[VGA 640x480]
Video Size	Set the video resolution. Options:[960 1280x960]/[640 640x480].
Night vision Sensitivity	Choose the night vision sensitivity. Options:[Low]/[Middle]/[High].
Power Frequency	Set the light source frequency to match frequency of electricity supply in local region to prevent interference.

	Options:[50Hz]/[60Hz].
Date&Time	Set the date and time of device.
Date Stamp	Add the date stamp on the photo or video files. Options:[Off]/[Date]/[Date&Time].
Language	Set OSD (on-screen) language. Options:[English] / [Simplified Chinese / [Traditional Chinese] / [French] / [Dutch] / [Spanish] / [Italian] / [Portuguese] / [German] / [Russian] / [Japanese] / [Korean].
Power Save	To save battery usage, you can set the device's automatic shutdown time. Options: [3min]/[5min]/[10min]/[OFF]

Reset device	Restoring factory setting will delete all previous user settings. Options:[Yes]/[No]
FW Version	User can see the firmware version information.



9) Playback

Watching Stored Videos and Photos in the photo mode:

press MODE button to select the Playback mode. In playback mode, press the up or down button to turn pages forward and backward, the playback order is the shooting order.

10) Delete & Lock

Menu	Function	Operation
Lock	Lock or unlock the current one file or all files in memory card. Options: [Lock /Unlock One] / [Lock All]/ [Unlock All].	Press Menu button (8) in playback mode. Press Up/Down button (3/4) to scan and press Shot button (10) to choose lock.

Delete	Delete the current one file or delete all files in memory card. Options: [One]/[All].	Delete stored videos and photos in playback mode, press MENU button to enter the “delete” option, select the delete option, and then select the content to be deleted.
--------	--	--



Notice:

Device Power Off

- a. If the device fails to activate, check for defective, missing, or improperly-installed batteries. Replace or install batteries correctly.
- b. Please make sure to use only Alkaline batteries.

11) Unclear Image Reasons

- a. If you wear glasses, please keep them on while using the device.

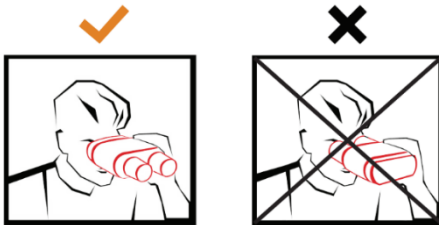
- b. If at day, make sure the IR is off (if IR is on, screen will turn from colored to black and white).
- c. If at night, make sure you have turned on the IR, press IR up(3) (if IR is on, screen is black and white).
- d. Please rotate to the left to focus on the farther targets, and to the right to focus on closer targets. (the lens is aligned with the target, observed through the screen, according to the actual distance, turn the focus wheel to adjust the focus until the screen display is clear).
- e. There is a Far-Near logo on the focusing wheel. Rotate the focusing wheel in the corresponding direction according to the far/near viewing distance. You need to rotate the focusing wheel to the left for long-distance viewing, and to the right for close viewing. The focus is in place until the screen display is clear.

f. Please do not use it through windows.

Whether or not the infrared light (IR) is turned ON, the device cannot observe objects through window glass.



g. Please use the device in the correct direction as shown in the figure.



25

◆ **Download files to PC**

There are two ways to download files from the device to a computer:

- a. By inserting the memory card into a card reader.
- b. By connecting the device to a computer using the supplied USB cable.

1) Using a Card Reader

- a. Eject the memory card from the device and insert it into a card reader. Then connect the card reader to a computer.
- b. Open [My Computer] or [Windows Explorer] and double-click the removable disk icon that represents the memory card.
- c. Copy images from the card into a directory of your choice on

the computer's hard disk.

2) Connecting the Device to a PC through the USB Cable

- a. Turn on the night vision. Connect it to a computer through the supplied USB cable.
- b. When connecting to the computer, will appear “MSDC” on the screen.
- c. Open [My Computer] or [Windows Explorer]. A “Removable Disk” appears in the drive list. Double-click the "Removable Disk" icon to view its contents. Files stored on the camera are located in the folder named "DCIM".
- d. Copy the photos or files to your computer.

◆ Maintenance

- a. Before cleaning the device, disconnect it from the power

supply (remove batteries)!

- b. Only use dry cloth to clean the exterior of the device. To avoid damaging the electronics, do not use any cleaning fluid.
- c. Clean the eyepieces and/or lenses only with a soft, lint-free cloth, (e.g. Microfiber cloth).
- d. To avoid scratching the lenses, use only gentle pressure with the cleaning cloth. Protect the device from dust and moisture.
- e. Store it in a bag or box.
- f. Remove the batteries from the device if it is not used for a long time.

◆ **WARRANTY**

This product comes with a **12-MONTH WARRANTY.**

Please don't hesitate to contact us with any questions and problems. You can contact us via:

Email: **support@dsoon-tech.com**

◆ FAQ

How many batteries are required? And how long does it last?	6AA alkaline batteries 4H with IR on/11H with IR off
Is infrared light visible?	IR light is invisible
Resolution of picture and video?	1280x960 for pictures 1280x960@30fps for videos
	Binoculars with PE Bag x1 Neck Strap x1 USB Cable x1

What's included in the package?	32G TF Card x1 User Manual x1 Backpack x1 Anti Static Wiping Cloth x1 Paper Card for Screen x1
What's the zoom factor?	3x Lens Magnification/4x Digital Zoom
What's the size of the screen?	2.31" TFT Screen
Max night viewing distance?	300M
Warranty?	12 Months warranty
Rechargeable batteries?	No

